

Table of Contents

Installing Ozi on the Navway 2

OziExplorer - Getting started 2

OziExplorer Interface 2

Configuration - Recommendations 2

Advanced Setup 2

Additional Help 2

Installing Ozi on the Navway

The Navway device from Ausway, uses the Microsoft Windows CE operating system, and as such is capable of running OziExplorer.

There is a little bit of work necessary to install OziExplorer on the Navway, but it is not complex, and you should be able to complete the basic install in under a couple of minutes.

We have also included some detail at the end of this document of how to do a more advanced install of OziExplorer on the Navway.

What you need to complete the install:

- Microsoft ActiveSync® installed on your PC (*Navway CD*)
- USB cable for the Navway
- A downloaded copy of the OziExplorer CE
- A license key for OziExplorer CE

Downloading a copy of OziExplorer

The link below is the correct copy to run on the Navway device. If this link changes, look for the download on the OziExplorer CE page of the OziExplorer.com website, and download the install for “*PDA's running Windows CE OS 3, 4 or 5 Core and Handheld PC 2000*”

http://www.ozieplorer3.com/ozice/downloads/v2/wince_core_setup.exe

If you don't have a license of OziExplorer CE, you can buy it online at the OziExplorer.com website, and it only costs \$40.

Connecting the Navway with Active Sync

I. Installing Microsoft® ActiveSync®

In order to transfer your data between your PC and your navigation system you need the Microsoft® ActiveSync® program.

The cost of the navigation system includes a license for this program which can be found on the Support CD.

Attention!

Important files can be overwritten or changed during the installation of software. You should create a hard disk backup, in order to be able to have access to the original files in the case of possible problems following the installation.

You must have administrator rights to install the software under Windows® 2000 or XP.

Attention!

You should not connect the navigation system to your computer yet.

1. Insert the Support CD and wait until the program starts automatically.

Note

The Auto Run function is probably deactivated if it does not function. The Setup program on the CD must be started, to start installation manually.

2. Choose the language, click then Install ActiveSync® and follow the instructions on the screen.

II. Connecting with the PC

1. Press the On/Off button to start your navigation system.
2. Connect the USB cable (**optional**) to your navigation system.
3. Push the USB connector into a free USB port on your computer.
4. The hardware installation assistant recognises now a new appliance and installs a suitable driver which can take some minutes. Repeat the connection search if it fails the first time.
5. Follow the instructions on the screen. The program will now set up a partnership between your PC and the device.

III. Working with Microsoft® ActiveSync®

ActiveSync® will be started automatically if you connect your navigation system to the PC. The program will check whether the device is one with which a partnership has been entered. If this is the case, the changes that have taken place on the PC and on the navigation system since the last synchronisation will be compared and adjusted to each other. You

will be able to define exactly which data will have priority during the synchronisation in the settings of the ActiveSync® Program.

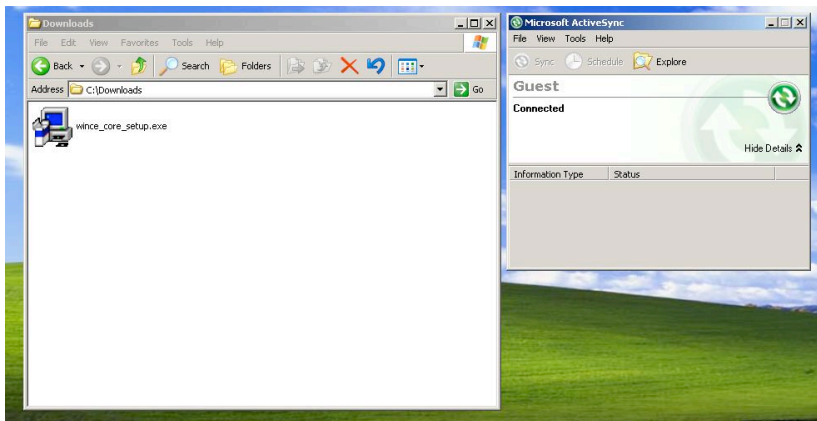
Call up the Help of the Program (with the F1 Button), in order to become familiar with the effects of the respective settings. A restricted **Guest Access**, with which you will be able to exchange data, for example, will become active automatically if the navigation system has not been recognised as a partner.

If this is the case, although the process concerns the registered partner device, separate your navigation system from the PC and switch it off and on again. Now connect your navigation system to the PC, to restart the recognition process. Repeat the process and, restart your PC in addition, if your device continues to be recognised as a guest.

Note: Make sure that you always connect your navigation system to your PC with the same USB connection, otherwise your PC will allocate an additional ID and reinstall the device.

Installing OziExplorer

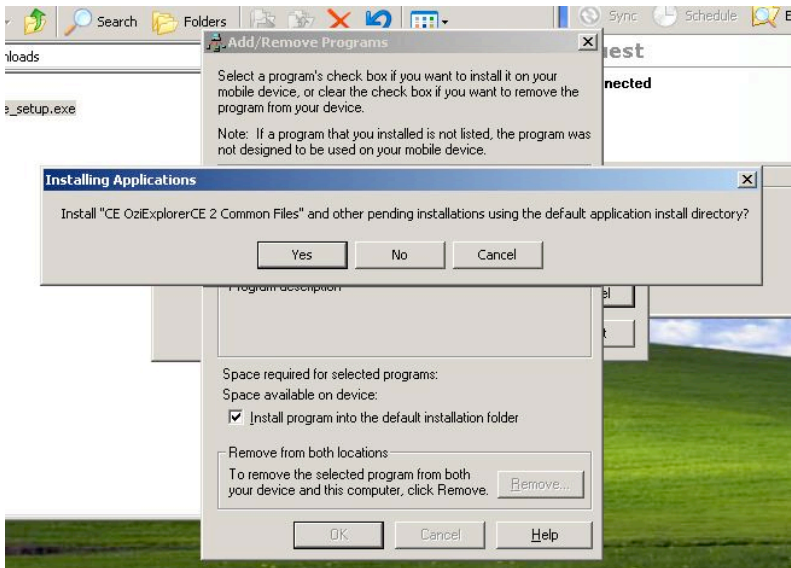
Once you have ActiveSync® running on your PC, and the Navway connected in a partnership, you can install the downloaded OziExplorer CE application.



Open the folder using Windows Explorer, where you downloaded the file, and double click on the wince_core_setup.exe file to start the process.



Click on the "yes" button to proceed with the install...

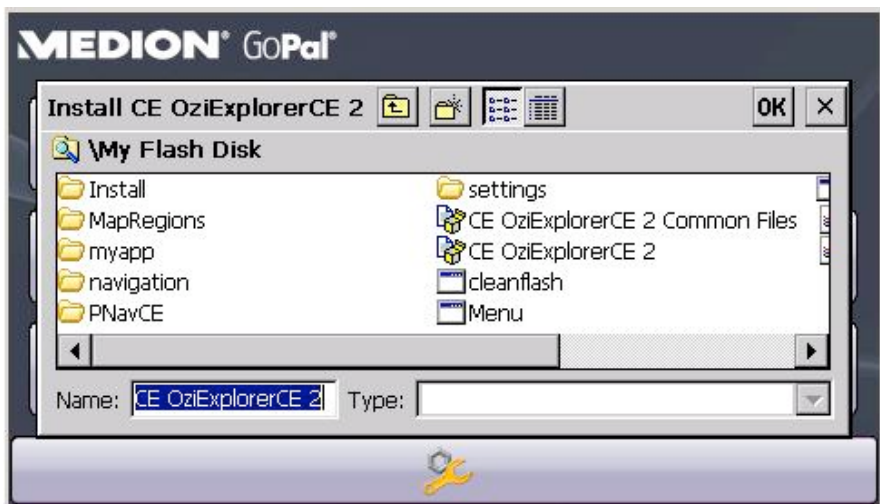


Click on the "No" button, and in the next dialog box, change the "Save In" drop down menu to read "My Flash Disk", and click "OK" to install.



Once the files have been copied onto the Navway, ActiveSync® will ask you to check the Navway screen to complete the installation.

You should see the following screen,

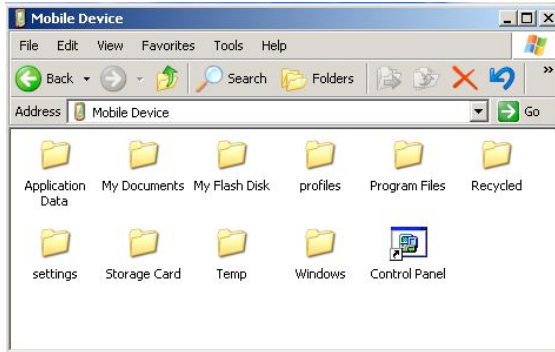


Double-click on the “myapp” folder, and then click the “OK” button to install.

You will need to repeat this process to install the OziExplorer Common files.

Once this has completed, we need to do some manual clean-up before the Navway will recognise the newly installed application.

In Windows Explorer, open “My Computer”, and then open “Mobile Device”.... you should see the following folder structure.



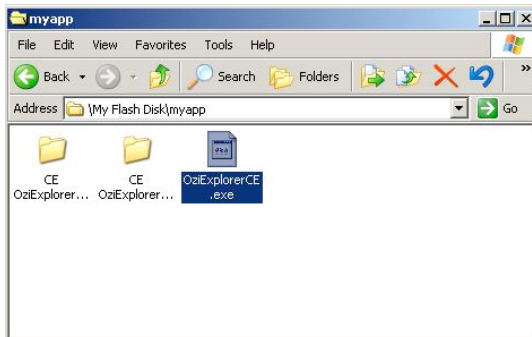
open the folders in this sequence:

My Flash Disk > Myapp > CE OziExplorer CE 2 >

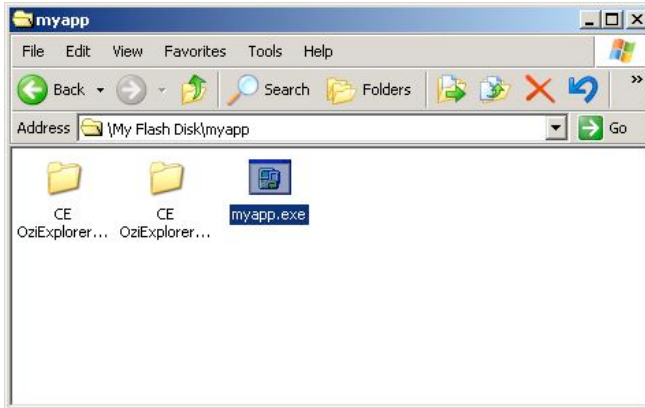
you should then see a file called OziExplorerCE.exe, select this file and copy it,(press CTRL + C)

Click the “Back” button or the “Up folder” button to move back up the tree to **My Flash Disk > Myapp >**

now paste the file into this location (press CTRL+V), you should now see the OziExplorerCE.exe file appear.



Make sure the OziExplorerCE.exe icon is highlighted blue by clicking on it once, then click on the OziExplorerCE text to rename the file. We want to rename the file to myapp.exe as below.



Once you have done this you have completed the OziExplorer basic setup.

Disconnect the Navway from the PC, and then shut down the Navway completely by holding the power button down for more than 5 seconds.

Once the Navway has powered down completely, restart it by holding down the power button for more than 5 seconds, then releasing.

You should get presented with a new icon on the main menu as below.



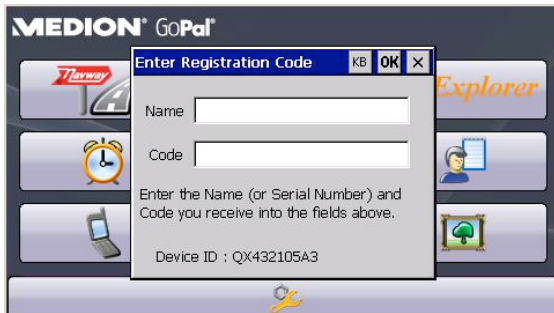
OziExplorer - Getting started

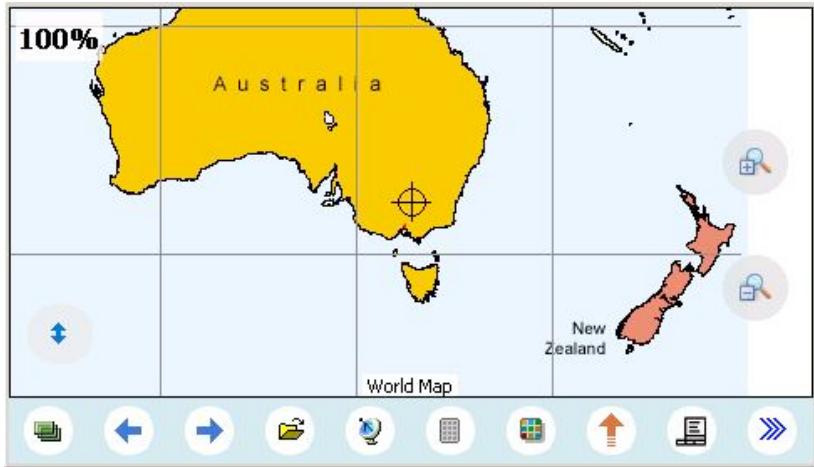
OziExplorer CE has now been installed on your Navway Street Navigator in “Evaluation” mode, to activate OziExplorer fully, you will need to enter your OziExplorer CE license code when you first run the software, if you don’t have a license already you will need to purchase an OziExplorer CE license from www.ozieplorer.com

To start OziExplorer on your Navway, get to the main menu on your Navway device, and click on the “My App” icon.



You will then be presented with the registration screen, clicking on the small “KB” button will give you an on-screen keyboard for entering your license code.





OziExplorer Interface

The first “stacked” screen icon at the left of the control bar on the bottom of the screen always takes you to the OziExplorer “Main Menu”.

OziExplorer has a system of “Page’s” which can be moved through using the two blue arrows on the bottom of the display, this allows you to easily move from a “moving map” screen to a configuration screen, to a detailed information display.

These pages can be customised on a PC by downloading the OziExplorer Screen Designer program from the link below:
http://www.ozieplorer3.com/ozice/downloads/v2/ozice_screen_designer_setup.exe

The yellow folder icon allows you to open a specific map.

The Satellite icon starts and stops the GPS.

The small grid icon opens a “page selection” screen. While the coloured grid opens the “main toolbar” with more options.

Configuration - Recommendations

From the configuration screen in OziExplorer, you can change a lot of the way OziExplorer functions. We recommend the following changes be made for easy and accurate operation on the Navway.

Map/Data Folders

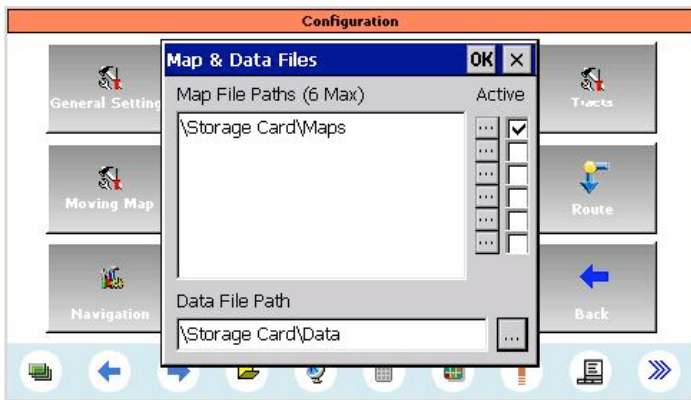
Clicking on this button brings up the screen below, we recommend clicking on the “...” button beside the first item in the list, and then navigating to “**Storage CardMaps**”.

The Data File Path, should be set to “**Storage CardData**”

This effectively makes OziExplorer look exclusively to the SD Memory card for Map files, and waypoint / track files instead of the limited built-in memory of the Navway.

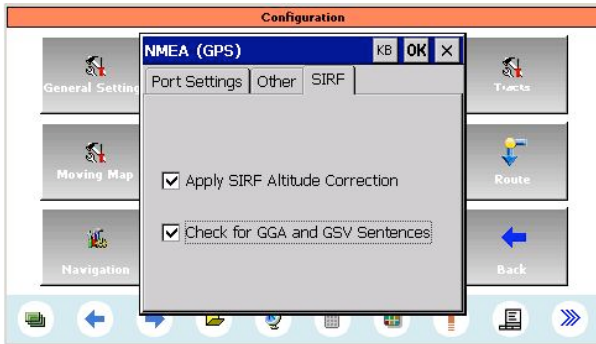
Image Folders

Clicking on this button brings up the screen to select the storage path for the map image files, change the first path to be “**Storage CardMaps**”, this will force OziExplorer to load map images from the SD memory card.



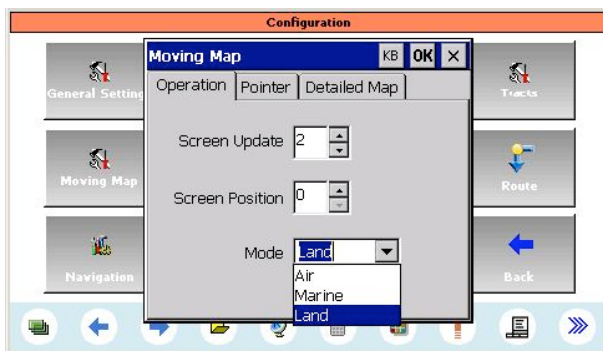
GPS (NMEA)

Clicking on the GPS (NMEA) button, and then the “Sirf” tab, will bring up the following screen. We recommend “ticking” both of the boxes on this page to ensure accurate altitude data, and satellite data is returned from the SIRF GPS chipset built into the Navway.



Moving Map

Clicking on the Moving Map button will bring up the following screen, we recommend changing the “Mode” to match how you will be using OziExplorer i.e. Land, Marine or Air. This changes the terminology used within OziExplorer, and the style and method of direction prompting when navigating along a route.



Advanced Setup

If you are comfortable editing XML files, and wish to customise the install of OziExplorer on your device, you can edit the main menu for the Navway to display a different icon, and look for a different executable file, e.g. OziExplorerCE.exe this will make doing future updates to oziExplorer easier.

XML file

If you browse through the Mobile Device using windows explorer, to the following directory, you will find a file called menu.xml.

My Flash Disk\navigation\menu

Copy menu.xml onto your computers desktop or a temporary folder, and edit it with notepad.exe, and copy back to the mobile device when finished editing.

Find the section below (this is about 2/3rds of the way through the document)

```
<app name="app1" madatory="1">
  <icon posX="323" posY="46" width="145" height="52" >
    <resource path="navigation\menu
\480272\icon_MyApp.png" />
  </icon>
  <action path="MyApp" />
  <action path="\my flash disk\MyApp\MyApp.exe" />
</app>
```

Changing MyApp.exe to OziExplorerCE.exe will make it easier to install future updates to OziExplorer.... i.e you will no longer have to copy and rename the OziExplorer executable file every time.

Changing icon_MyApp.png to an icon file that you have created allows you to customise the button displayed on the main menu. The button must be a .png file (use Microsoft Paint), and should be stored in the file path below

\My Flash Disk\navigation\menu\480272

Additional Help

To get the most functionality out of OziExplorer on the Navway, we recommend investing in a copy of OziExplorer to run on your PC. This allows you to easily build waypoint files, route files, and view the track files you have created on the Navway on a large screen that shows more of a map at once.

If you don't have a full copy of OziExplorer, it can be purchased and downloaded direct from the OziExplorer Website:

www.ozieplorer.com

Managing Maps - Memory Cards

To save the limited memory on the Navway device, we recommend that all waypoints, tracks and maps be stored on an SD Memory card as discussed in the previous pages. You can copy files to and from the Navway device, and the SD memory card plugged into it, by establishing an ActiveSync® session between your PC and the Navway. Please refer to page 48 of your Navway manual for instructions on doing this.

Additional OziExplorer information

There is a wealth of information, including a detailed online and downloadable help page for OziExplorer on the OziExplorer website. The site also has links to active internet communities where problems, tips and general discussion about OziExplorer take place.